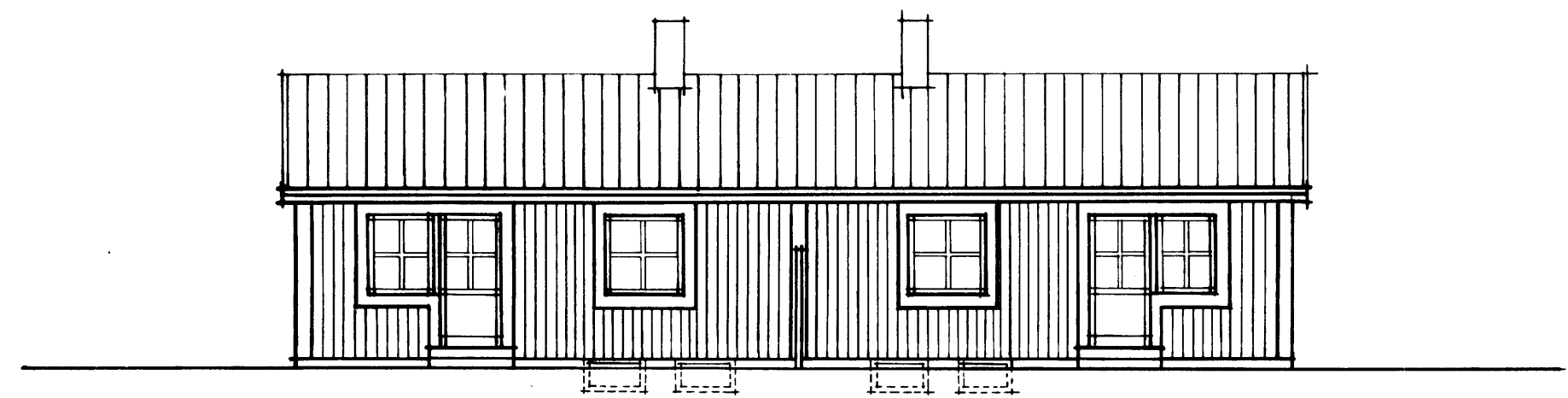
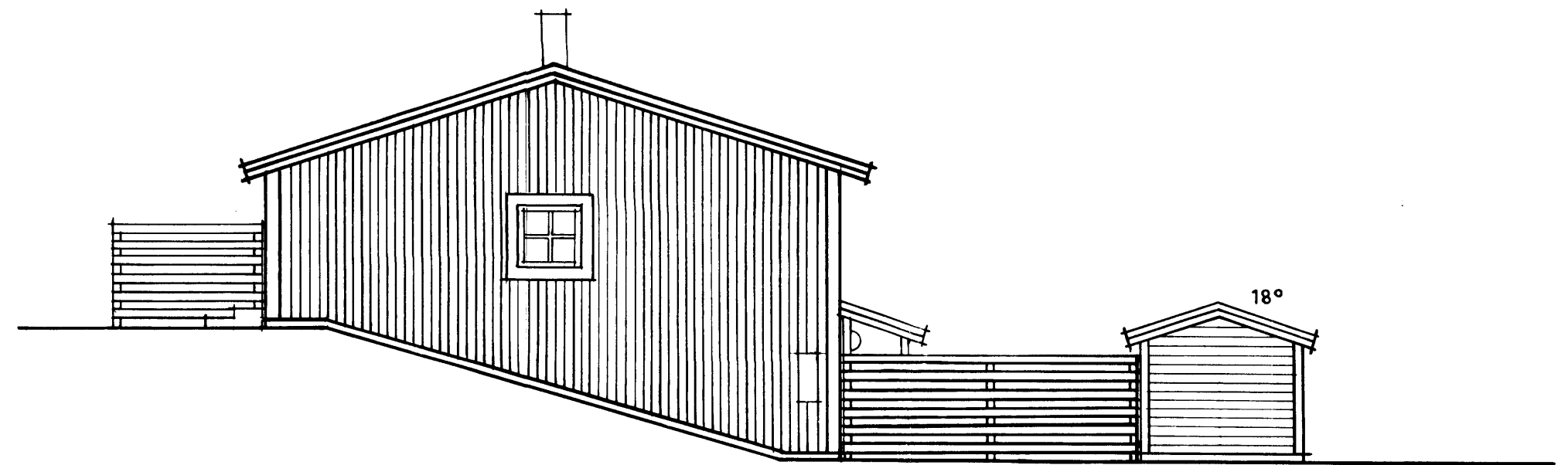
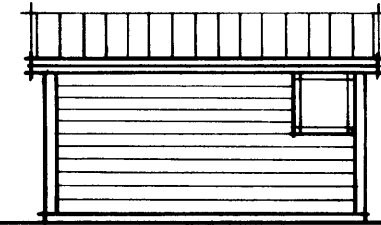
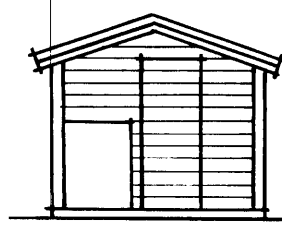


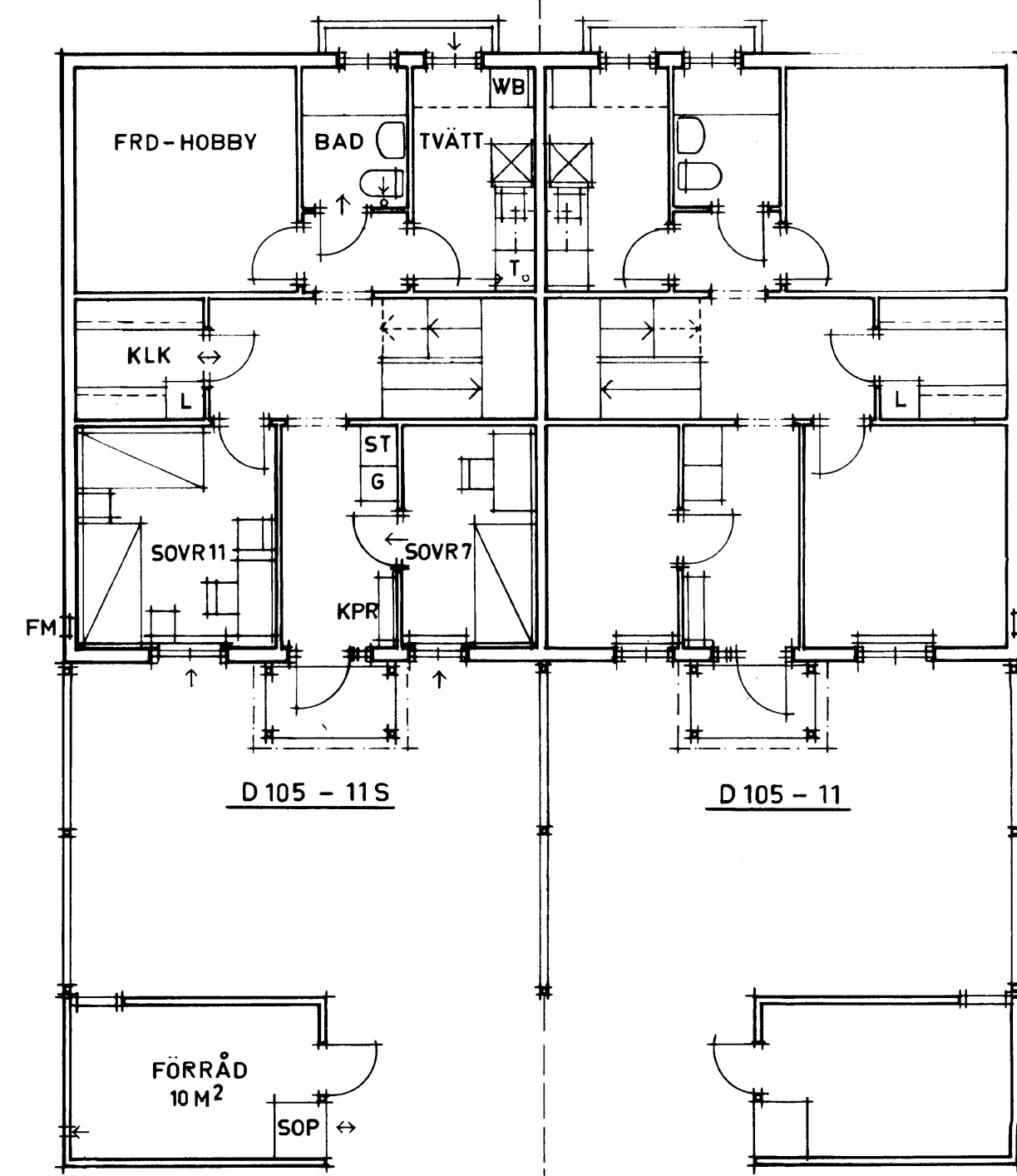
ENTRÉFASAD



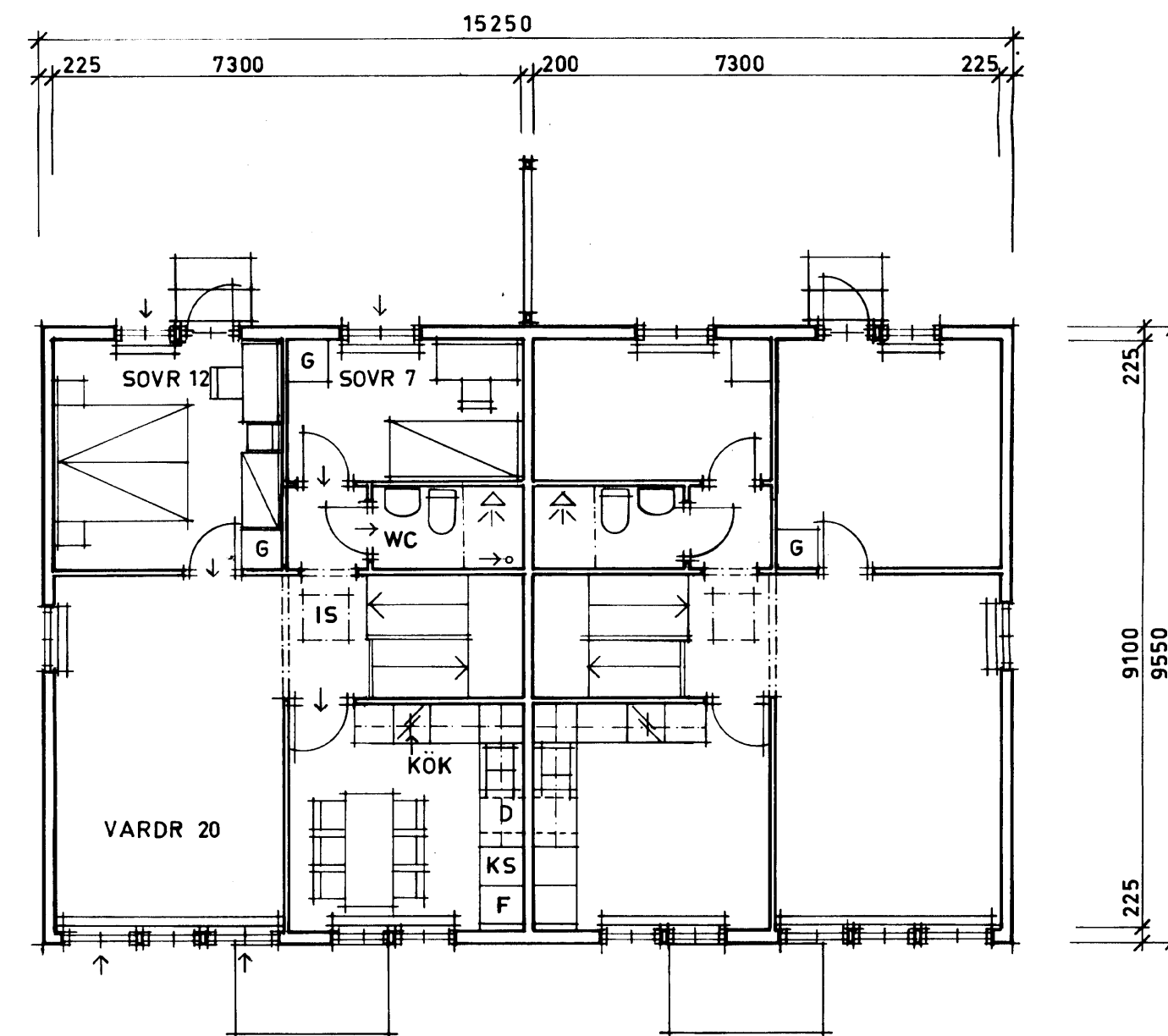
TRÄDGÅRDSFASAD



GAVELFASAD



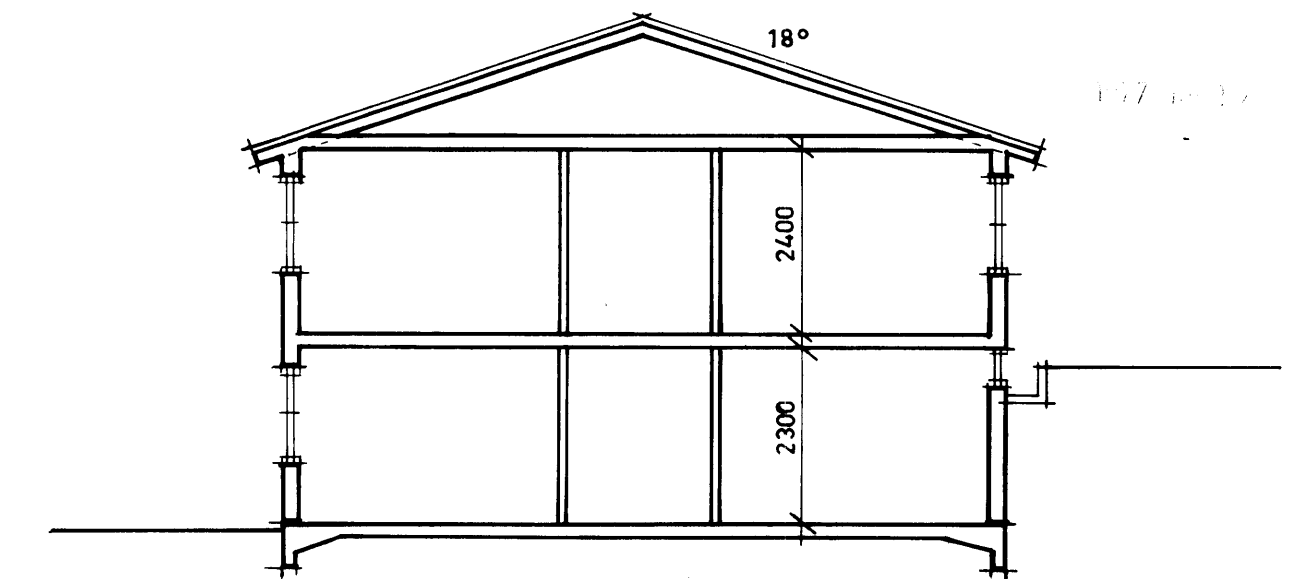
SUTERRÄNGPLAN



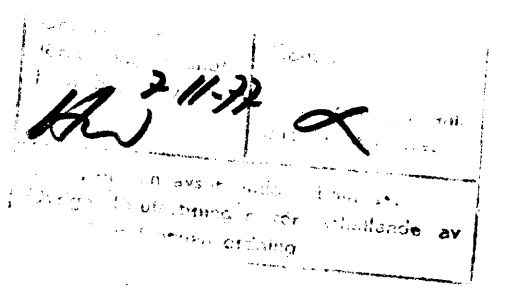
ÖVERPLAN

- D = PLATS FÖR DISKMASKIN
- FM = FASADMÄTARSKÅP
- IS = INSP. LUCKA

Ösm 77-466



SEKTION



D 105-11011S

4 RK, LY = 116 M²

| | | | | | |
|---|----------------|------------|---|-------|------------------------|
| SVENSKA RIKSBYGGEN PROJEKTERINGSKONTORET I STOCKHOLM ARKITEKTSEKTIONEN SALTMATARGATAN 8 TEL 08/14 10 60 BOX 19015 104 32 STOCKHOLM 19 | | | ÖREBRO KOMMUN HOVSTA (DELPLAN 3) ÖREBROHUS 18 KV. SKRUVSPIKEN PLANER, FASADER OCH SEKTION SKALA 1:100 | | |
| RITAD AV Z.K. | KONSTRUERAD AV | GRANSAD AV | ARBETSNUMMER 538710 | ETAPP | RITINGSNUMMER A2:10 |
| STOCKHOLM 1977-06-15 | | | december 02 nytt 15 | | |